

AgStudio 2017 SP1

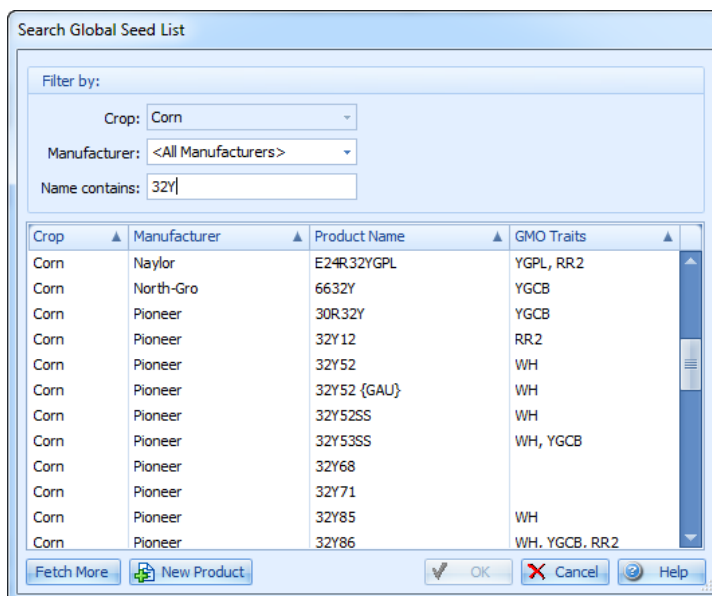
Release Notes

June 22, 2017

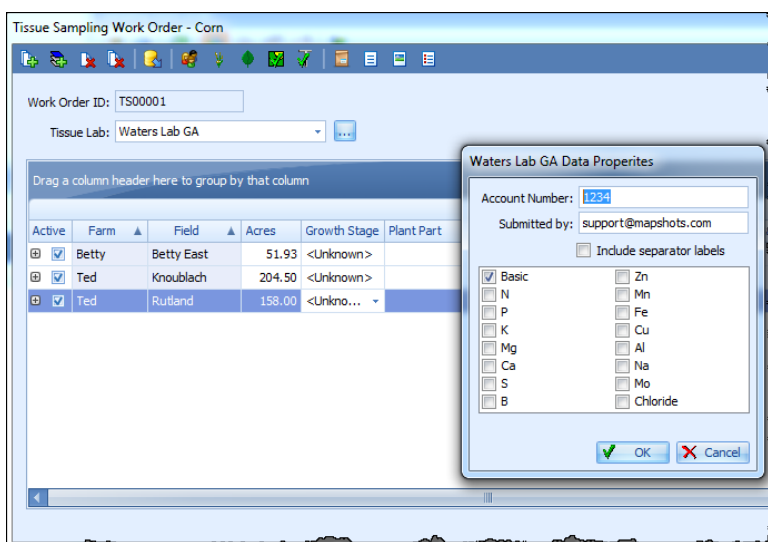
With the AgStudio 2017 Service Pack 1 release, you can now query more than 10,000 products to use on your fields with information such as EPA numbers, nutrient analysis, and seed traits. In addition to this substantial enhancement, this release also contains a Batch Manual Field Ops extension. As always corrections and enhancements when dealing with card managers and Command Center Sampling Reports are also included.

Enhancements

To facilitate using the new Standardized Product databases for chemicals, fertilizers, and seed, updates to the Product Editors and Product Selection tools have been made. In the Product Editors (Fertilizers, Chemicals, and Seed), you have the ability to access a Global Search which allows you to select products from the Standardized Product databases. From extensions with product selection tools (i.e. FieldOps Resource Linker, Advanced Variety Placer, etc.), new dialogs are visible to allow for selecting or creating the most appropriate product at the time of use.



Added the ability to record CRM, GDD to Maturity, GDD to Silk, and Crop Heat Units when defining Seed Products



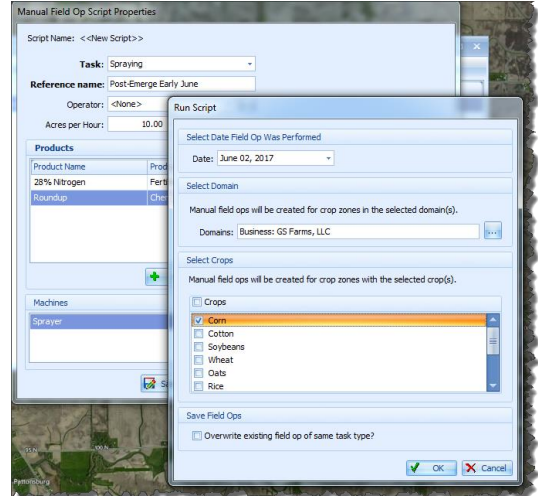
Provided the ability to create Tissue Test Sampling Work Orders within the Sampling Work Order extension. Initially, we support A&L Labs Great Lakes, Waypoint Analytical, and Waters Labs in Modus format. This functions similar to creating Soil Sampling Work Orders with a few differences. You do not need to enter Samples per Acre or Extra Bag Labels. Instead, Growth Stage and Plant Part can be entered.

Updated the line import feature in the Guidance Patterns extension to support importing curved lines from Trimble as well as importing lines from an AgLeader setup card

- Implemented a new extension to manually create field operations in batch mode.

Card Managers

- Continued work with Deere Gen4 data via ADAPT data
- GS3 as-planted data issue resolved when no product was logged
- Corrected an error with the conversion of units on Versa as-applied data when there are non-valid sensors recorded
- Corrected an issue with the Trimble card manager when reading as-planted data containing singulation
- Prevented an issue caused by shapefiles for Raven that could contain special characters
- Added support for CNH ISO as-applied data by using the ISO format and ignoring the CNH format. This was previously disabled due to data being duplicated with the CNH format. With the latest CNH firmware, the ISO data may now contain more information than the CNH format.



Miscellaneous

- Updated the USDA Planting report to more accurately report acres when run at the operational boundary set level
- Updated to latest Third-party components, including Raven Slingshot components
- Minimized disruptions when Imagery or other service outages occur
- Corrected an issue that prevented the automatic clipping of soil types when importing new boundaries
- Adjusted the Crop Zone Boundary theme to make it easier to perform splits using the background imagery
- Updated the KML boundary import to support new namespaces

Command Center

- Re-enabled the date filters and adjusted the zoom level on Command Center Sampling Reports
- Resolved an issue when editing a user in Command Center on Safari for Mac OS
- Updated Command Center Sampling Reports to correctly display charts/maps in Safari on iOS
- Added Help document to Command Center Sampling Reports