

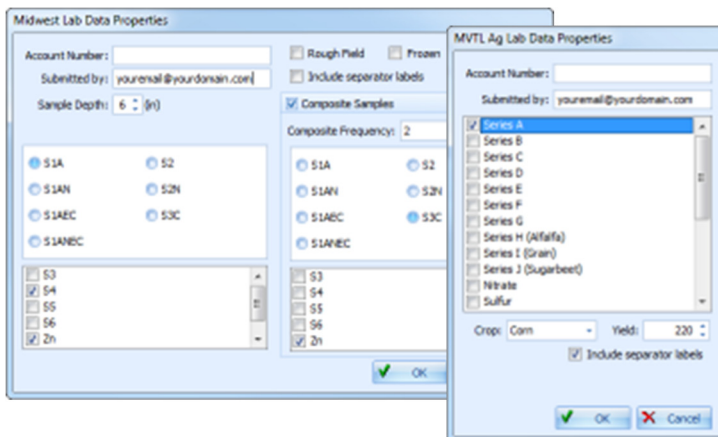
# AgStudio 2017 SP0

## Release Notes March 6, 2017

You asked for it, and we responded. AgStudio 2017 SP0 is available and contains many of the new features that you've requested. Of course, we also provided incremental updates for performance and corrections, as well.

### Sampling Work Order

- Significant improvements to the Sampling Work Order extension to recognize that previous fields were added to the work order and not try to create another copy of the data. This also enables you to reprint bag labels and submittal sheets
- Performance improvements have taken loading a large number of work orders from minutes to seconds
- Corrected a Date issue that could cause an error in specific cases
- Midwest labs now has lab specific properties and submittal sheet
- Minnesota Valley Testing Lab (MVTL) now has lab specific properties and submittal sheet



### Card Managers

There were several requests for additional support and updates to various card managers. We have responded with the following:

- Refactored all card manager to a common framework
- Corrected ISO XML export to correctly honor the 'Include All Resources' setting
- Updated ISO XML import to better handle Krone forage data
- Implemented new CNH .NET component
- Added support for CNH forage harvest data
- Added support for CIH\NH wireless data transfer connection

Case IH – AFS Connect® Data Sharing

New Holland – PLM Connect® Data Sharing

- Added support for AGCO VarioDoc wireless data transfer connection
- Updated Apex card reader to better handle mixed shapefiles in the same folder
- Improved support for Deere Gen4 monitors when using MyJohnDeere wireless data connections
- Trimble As-Applied card reader now imported Singulation, Skips, and Multiples if available on seeding data
- Corrected an issue with Versa Guidance lines that would cause all lines to export for all fields

## Field Ops

- Improved automatic resource linking increases the probability of products linking at the front, end enhancing the accuracy of what you bring into your database.
- Harvest data can now be exported as .csv and .txt in addition to shapefiles

## Seeding

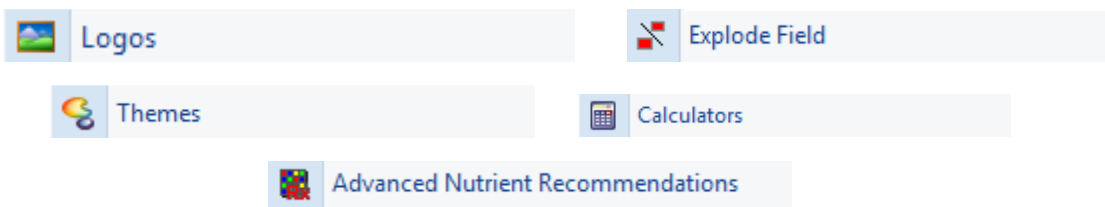
- When using Place a Variety, if you cancel from the Add Seed dialog you return to the previous part of the process. This enhancement remediates the previous issue where you were cancelled out of the entire process
- VRS Editor was updated with the Join Small Regions tool

## Reports

- Updated report books to allow the selection and export of individual PDFs instead of all reports in a single PDF
- Corrected an issue with the Yield by Variety report when ran multiple times
- Corrected Crop Mix Summary report when running as a landlord to report the appropriate reported areas
- Improved Yield by Shareholder report when printing as an associate
- Corrected an issue where the Lease crop zone could have the wrong reported area
- Updated Crop Zone List by Farm report to ensure totals were not rounded

## Miscellaneous

- Added support for exporting GeoJSON from the Layer Export extension
- Enabled the option to merge layers stored under the crop zone
- Updated\Added icons to several extensions for a more distinct visualization and to make these extensions accessible to the Favorites option. We will continue to add more in future releases



- When viewing Alternate boundary sets (Landlord or Associate) extensions that are not available for use are no longer displayed in menus.
- Diagnostic dialogs were updated to provide more information and streamlined options for saving information

## **Select**

- Currently pursuing a list with of new enhancements that should be available at the next release
- Corrected an issue where the crop year may not always get updated
- Added prompt to report books to ensure the appropriate domain is selected prior to running
- Corrected an issue that prevented VRS recommendations from being exported