

AgStudio 2015 Service Pack 3 Hot Fix 3

Release Notes March 8, 2016

The primary focus of this release of AgStudio is the inclusion of several enhancements to the VRA Export process. In addition, there are two new features, several enhancements to improve performance and usability, and updates to Third-Party Data Import. Finally, a significant performance improvement was found and implemented for all reports making them much faster especially on slower connections.

New Features

- Added an administrator's tool to recover resources that have been made inactive.
- Added a new extension in the Layers menu to facilitate setting the layer to a read-only or editable state. To enhance performance, you can set a layer as read-only which avoids the need to get a copy from the database every time the layer is accessed. When in a read-only state, the Layer Editor prevents edits to the layer. In subsequent releases of AgStudio, we will automatically set some types of layers to read only by default (generated surfaces and contours for instance) to boost system performance.

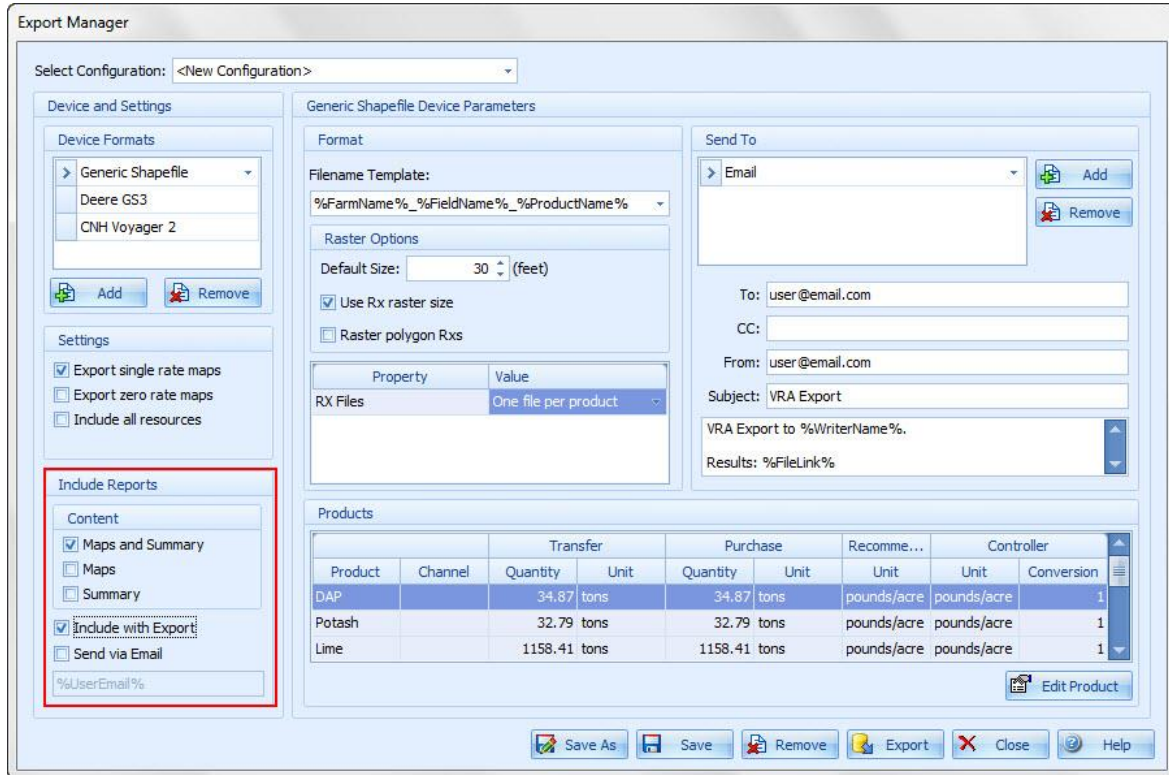
Enhancements

- To facilitate the selection of seed product matches, the FieldOp Resource Linker now provides a pick list of potential product matches when doing a search. In prior versions, it simply returned nothing if it could not find a single match.
- The %CropYear% macro is now supported in all filename templates.
- %*Key% macros are now supported in all filename templates. Keys are useful if you want to guarantee a unique filename for something like a bulk shapefile export, for example, use the %FieldOpKey% in your filename template.
- Improved the layer import tool to avoid creating small edge slivers when the layer being imported is not an exact match for the field boundary containing the layer.
- We now round the field acres in the VRA Recommendation map report to two digits.
- We have restored the availability of the Attributes filter when surfacing a single layer.

VRA Export/Export Manager

- We have created device-specific shapefile formats, rather than forcing you to set different properties and templates from within the general shapefile export. For instance, there is a Deere shapefile export now, and it ensures that your shapefiles are written into an Rx folder. There are also Precision Planting, Raven, and Trimble specific shapefile devices.
- We have created device-specific ISO formats as well, rather than forcing you to set different properties from within the general ISO export. There are dedicated ISO variants required for the various AGCO and CNH controllers.
- We combined similar SendTo factories. For instance, the Deere Setup and Deere Rx factories are now combined into a single MyJohnDeere factory. The Climate SendTo factories were also combined.
- The list of SendTo factories available for any selected device format are now limited to:
 - Those to which the selected grower has access (you won't be able to pick Climate if the grower is not linked to a Climate account).

- Those which are appropriate for the selected device (you won't be able to pick MyJohnDeere if the device is not one of the Deere variants).
- The ability to print Product Rx Maps and Product Rx Summaries directly as part of the VRA export process has been added to Export Manager.



- You can create scripts where you want to send emails to use across multiple users and/or growers.
- You can choose maps, a summary, or both.
- You can embed these reports directly into the export, just like the Quantities.txt file, and/or send an email with links to the reports.
- On the Email option, you can use macros like %UserEmail% and %GrowerEmail%. These will automatically be replaced with the email of the logged in user, or the selected grower.
- In this first iteration, the reports are similar to the ones that you have been able to generate directly from the report book or from within the VRA extensions. However, they are device specific.
- A future update will change the maps to reflect the actual maps that are sent to the device. For example, if you send an anhydrous Rx based upon soil type polygons to a Deere controller, we have to turn it into a surface, internally, before writing it to the card. Soon, the map generated with this option will actually be that of the surface map that we created and exported, rather than the original polygon maps.

Reports

- ✎ Significantly improved the performance of generating reports. For users with a slower connection, this enhancement enables you to generate reports much faster.
- ✎ The Fields by Farm List Report can now be configured for either a portrait or landscape display. The layout is dependent on the number of properties you choose to print.

Third-Party Data Import

- ✎ Several improvements to the Raven data importer.
- ✎ Support out-of-range file IDs from MyJohnDeere.com.
- ✎ Several corrections to AgLeader data imports.
- ✎ Support the new AgLeader InCommand updates.
- ✎ The “Max Speed” filter for field ops data was previously set at 20 mph but is now completely removed. Any harvest data if it shows combining faster than 22mph is still kicked out.
- ✎ Ensure that all product mixes reference a master mix, even if not defined within the source data.

Corrections

- ✎ Corrected an issue with MYVA failing to create management zones introduced in HF2.
- ✎ Corrected a geometry issue that prevented generating some surfaces within the Advanced Nutrient Recommendations and Soil Test Recommendations extensions.
- ✎ Corrected an error when filtering for seeding prescriptions when selecting prescriptions from prior years.

AgStudio Select

- ✎ You can now select existing VRA scripts created in the AgStudio desktop application when performing VRF and VRS Exports. This efficiency feature avoids the necessity of having to fill out the Device Format options and instead uses those options in the saved script.
- ✎ Update the navigation on tablets and phones for a touch friendly interface when using the domain navigation.