

AgStudio 2015 Service Pack 3 Hot Fix 2

Release Notes January 13, 2016

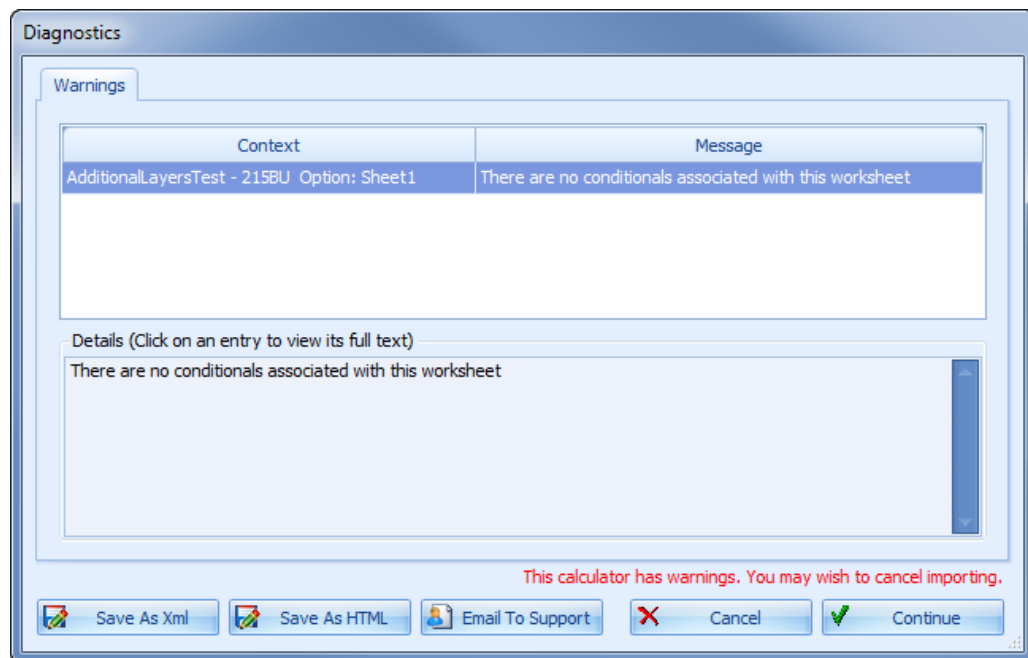
The primary focus of this release of AgStudio is the move toward using a different type of GIS processing. This will resolve problems where reports produce out of memory exceptions. The remainder of these GIS processing updates is planned for future releases. Additional updates are included below.

New Feature

- When adding a new resource via the Add feature in the Setup for Amendments, Chemicals, Commodities, Fertilizers, Biosolids, Seeds, and Crops, you now have the ability to click Preview on the Select a Product to Add dialog to view details about the Product Lot you plan to add.

Enhancements

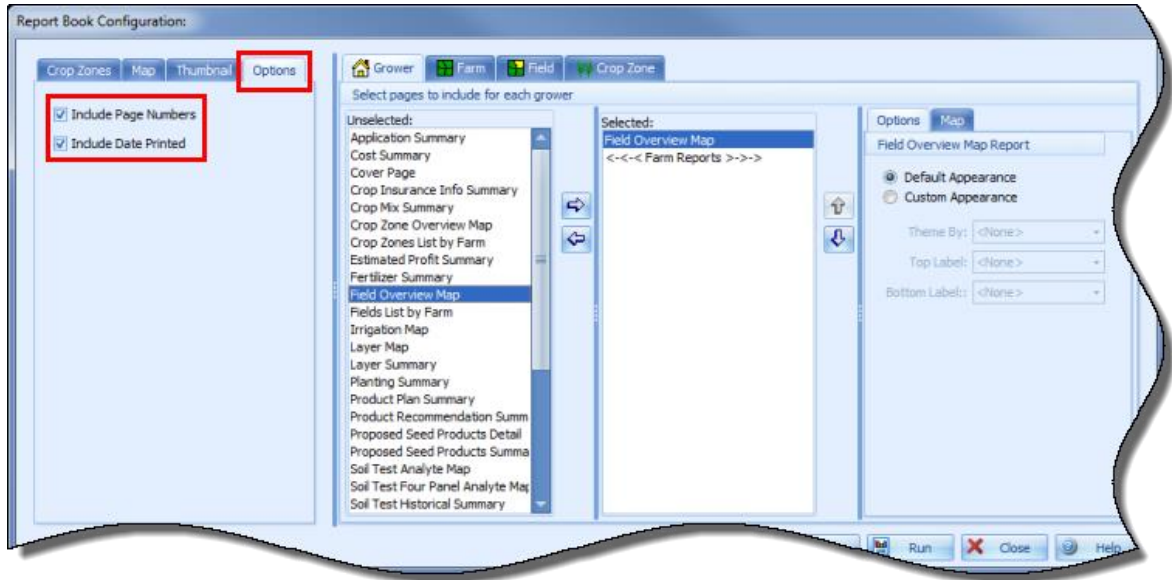
- The Diagnostics windows have been enhanced to:
 - Permit sending the message to Support or Saving it as an HTML or XML file
 - Provide details when issues are discovered during calculator imports



Reports

- An error that was causing the Yield Summary Report to hang has been corrected.
- The Product Recommendation Summary Report now updates the header according to the selected grouping in the Report Manager.
- Modified the code to enable the Yield by Irrigation Report to run when there are more than one management zone layers on the selected field.

- 🌱 A new feature within Report Books gives users the ability to include/not include page numbers and date printed on reports.



Miscellaneous

- 🌱 In the Advanced Multi-Year Yield Extension, the analysis process was updated to be more efficient by not attempting to analyze any commodities that were not selected in the Crops and Years grid. Previously, if any crop year was marked for analysis for a given commodity all crop years were at least checked for certain types of information before the analysis could be completed. Now, only commodities for the selected crop years are reviewed.
- 🌱 In limited cases, the SeedRate was being doubled for CNH Voyager 2 data. We implemented a Card Manager update to resolve the issue when there were three levels of sensor data instead of the more common two levels.
- 🌱 Corrected the Units measurement in the Quick Surfacers extension.
- 🌱 Added support to the Layer Import extension to appropriately handle shapefiles that do not contain any features. Previously, this type of shapefile would have caused the reader to fail.
- 🌱 The Precision Planting FieldView Add-On now reflects the new branding as Climate FieldView™